

# RodBuckle® Retractable Rod Hold-Down System

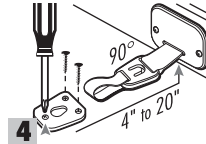
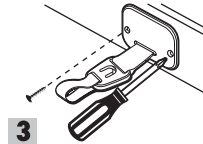
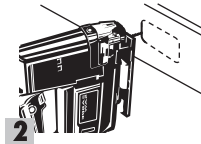
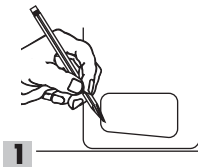
## Mount In Gunwale Or Deck Retractable One-Hand Operation

### MOUNTING INSTRUCTIONS:

1. Decide on the location for mounting your RodBuckle® (in the deck floor or the gunwale). Be careful to leave sufficient space on all sides of the RodBuckle® mounting area for use of tools, as well as clearance for installation.
2. Place the template provided in the location where you would like to mount the RodBuckle®. If you are mounting the RodBuckle® in the gunwale, place bottom straight edge of template as close to the deck floor as possible. (Make certain you have enough clearance on all sides of the RodBuckle® before cutting any holes.) Once you have the template in place, trace around the inside section of the cut out. *Figure 1*
3. Remove the template, cut out the center of outline area with saber saw or router. *Figure 2*
4. Insert RodBuckle® into mounting hole and ensure unit is level. Trace around mounting holes.
5. Drill two 1/8" holes for the two mounting screws. Do not drill more than 1/2" deep.
6. Secure the RodBuckle® into place with two of the screws provided. *Figure 3*
7. Install the bottom portion of the two part buckle between 4" and no more than 20" away from the face plate of the RodBuckle®. *Figure 4*
8. Buckle bottom must be perpendicular or square to the RodBuckle® face plate. (Web should pull out at a 90° angle from the face plate).
9. Lay buckle bottom on mounting surface, wider portion facing retractor.
10. Mark three holes to be drilled with center punch or other type marker.
11. Remove the buckle bottom and drill three holes with a 1/8" drill bit. Do not drill more than 1/2" deep.
12. Replace the bottom buckle and mount with three remaining screws.

### SIMPLE OPERATING INSTRUCTIONS:

1. Pull the RodBuckle® strap from faceplate and slide the top portion of the buckle securely into the slot on the lower portion of the buckle. Be sure top and bottom portions are fully engaged in locked position to ensure strap is secure.
2. To remove, pull out and up on the end web loop. Lift the buckle and slowly let the strap retract.



### CAUTIONS:

RodBuckle® is not to be used as an occupant restraint. Check for any hidden electrical wires or hydraulic lines before drilling or cutting holes. Be sure the top and bottom portions of the RodBuckle® are fully engaged in their locked position to ensure strap is secure (as described in the Operating Instructions). Failure to do so may cause damage to, or loss of, rods.

