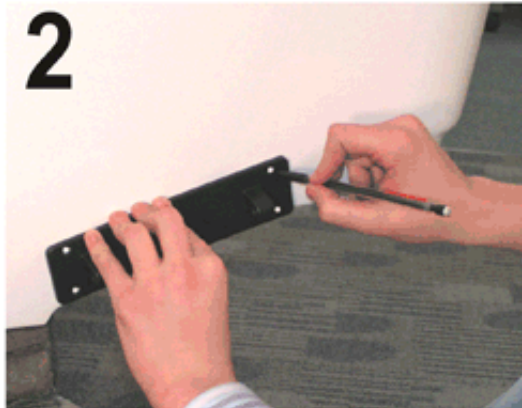


1



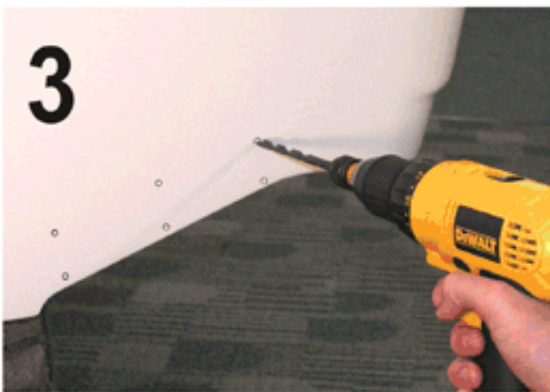
Choose The Location: Preferably 3" to 5" from the outside edge of the transom. Align the bottom of the hinge flush with the bottom of the transom.

2



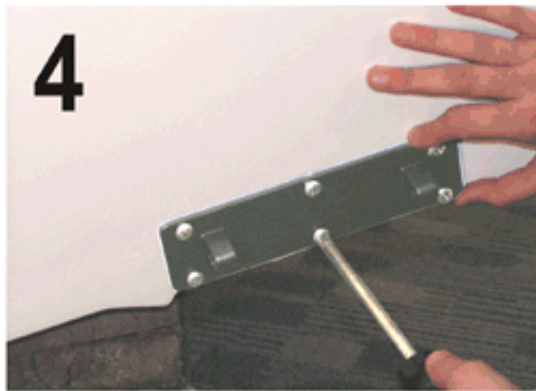
Mark Mounting Holes: Use the hinge as a template. Also make sure that you can mount the hinge in the same location on the other side of the boat.

3



Drill the holes: Use a 7/32" drill bit for Fiberglass transoms and a 3/16" drill bit for aluminum and wood transoms.

4



Install the hinge: Use small amount of marine sealant in each hole. Do not use excessive force when installing screws - ream the hole if necessary.

5



Attach the Plate: Align the plate & hinge holes, and use the 3/8" diameter 'snap & lock' pins to secure the plate to the hinge. Push the pins in until the head is flush. This may take some effort.

6



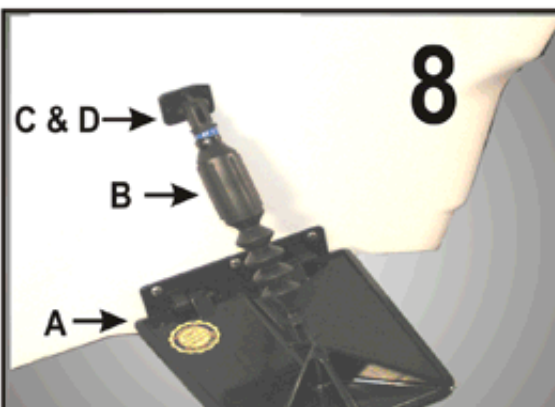
Attach the transom bracket: Use the 5/15" snap & lock pin to attach the transom bracket to the TOP of the Actuator (two cable clamps).

Installation continued

7



8



Attach the Actuator: Use the 5/16" snap & lock pins to attach the bottom of the actuator to the trim plate in Hole #3. **NOTE:** If needed, pressure adjustments can be made to suit your boat after a sea trial.

Install Transom Bracket:

- A) Allow the trim plate to rest in the deployed position (25°)
- B) Rotate the actuator to the transom until seated flush.
- C) Mark the holes, and drill with the 3/16" or 7/32" bit.
- D) Use marine sealant in the holes and attach the bracket with the #14 sheet metal screw supplied.

Repeat all steps for the opposite side, and your done!

Pressure Adjustment (after sea trial):

Top Speed: Trim motor to vertical until top speed is 2 to 3 MPH more than without Smart Tabs SX. If speed is less, adjust for less pressure (holes 1 or 2).

Porpoising: If the boat porpoises with vertical trim, increase pressure (holes 4 or 5)

Listing: Permanent lists can be corrected by increasing the pressure on the list side and reducing the pressure on the opposite side. Make sure that the cause of the list is known (i.e.: weight balance or prop torque).

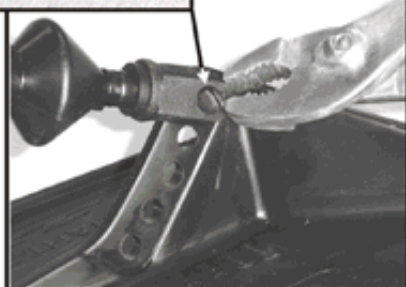
NEVER USE ANY OTHER PLAINING DEVICE when using Smart Tabs.



How to remove snap & lock pins



Use a standard or needle nose pliers to squeeze the slotted end of the snap & lock pin, then push the pin back through the hole.



Parts List:

Part #	Description	Qty.
TP9510	Trim Plate	2
CH9510	Hinge	2
HP9510	Hinge Pins	4
TB9510	Transom Bracket	2
EFP9510	Actuator Pins	4
MS141	#14 Machine Screws 1"	16
Actuators		2
GA5000-40, or GA5000-60, or GA5000-80 depending on SX model / application		



Customer Service:
Toll Free 800-233-0194
Tell: 440-746-1290 - Fax: 440-746-1291